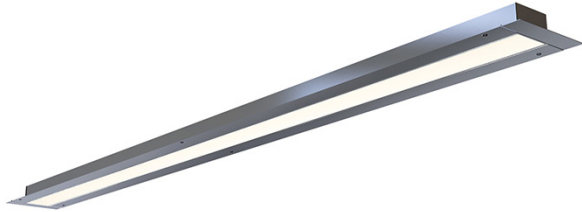
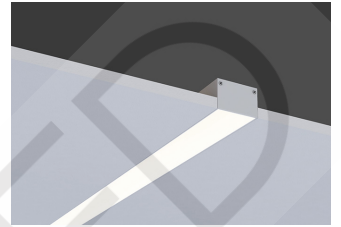
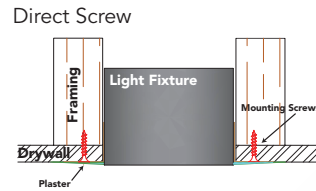


# Linear LED Fixture Spec Sheet



**LVLBY2T-XX-YY-ZZ**  
LVLBY2T Spec Sheet

## Mounting Options



Our **LVLBY2T trimless** LED Light Fixture is perfect for use in commercial or residential areas. Our **LVLBY2T** is a 2 inch wide line-voltage recessed linear LED light fixture capable of holding low-voltage LED strips making it suitable for a wide variety of linear lighting applications and an excellent solution for lighting garages, warehouses, or industrial lighting. With a **trimless, "mud-in"** flange this fixture can be seamlessly recessed into any surface with at least 1.3" of depth. Our **LEDBAR Y2T** features an integrated driver that allows one to plug the fixture directly into the line-voltage power source of the location. This fixture is available in standard sizes ranging from 24"-96" \**custom sizes available upon request\** as one continuous run, or in longer runs which can be achieved through linkable or custom configurations.

## Features

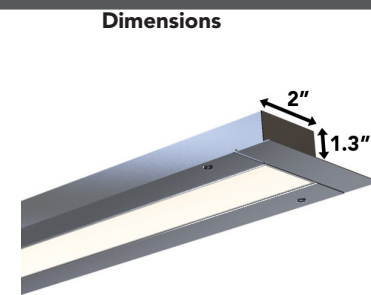
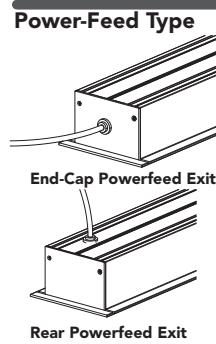
- **12-24VDC** Input
- Standard >80 CRI, CRI>90 available!
- **Trimless** Design Achieves **Seamless Recession**
- 0-10V Dimmable (With Dimmable Driver)
- Ultra Long Lifetime (70,000+ Hours)
- UL-Listed
- **5-Year Warranty**

## Available Colors

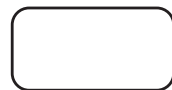


## Quick Specs

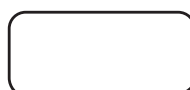
<b>Sizes</b>	Any size from 4"-96" (Linkable For Long runs)	
<b>Input Voltage</b>	12VDC or 24VDC	
<b>Power Output</b>	Power Output Per Strip	
	5W/ft White	3.5W/ft RGB
	10W/ft H/O White	6W/ft RGB+W/CCT
<b>Light Output</b>	700 lumens/ft (White) 1,400 lumens/ft (High-Output White)	
<b>Efficiency</b>	80 lumens/Watt (White) 80 lumens/Watt (High-Output White)	
<b>Lifetime</b>	50,000+ Hours (L-70)	
<b>Environment</b>	Suitable for Dry or Damp Locations (Waterproof Available Upon Request)	



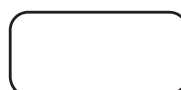
LVLBY2T-



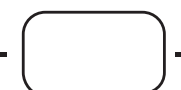
SO: 605 lu/ft



24: 2ft  
46: 4ft  
68: 6ft  
90: 8ft



WW: 3000K  
NW: 4000K  
BW: 5000K



**Mount Type**  
A: Direct-Screw  
see top of page



**Power Entry**  
A: Rear  
B: End-Cap