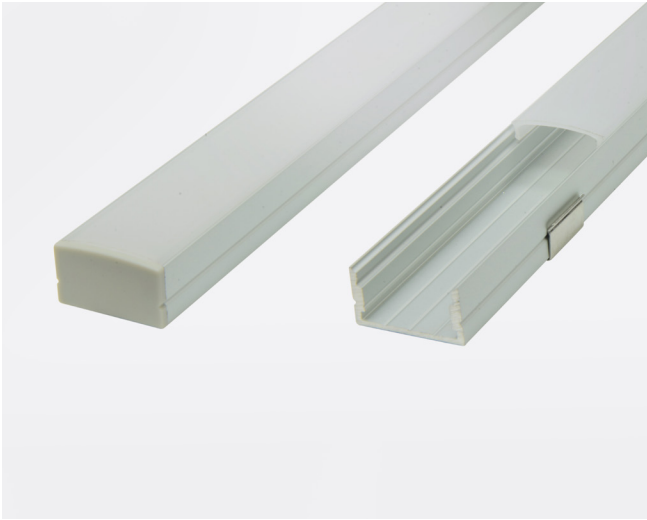


## PRODUCT OVERVIEW



For simple yet modern architectural designs with surface mounted lighting, Aluminum profile "OR" is a perfect solution. Specifically manufactured for GlowbackLED, we created a deeper design of our Aluminum Profile "O", so that dot-free, evenly diffused lighting can be achieved when used with our high-density DOTLESS LED strips. Aluminum profile "OR" can accommodate any LED strip up to 0.80" (20mm) wide and dissipates heat from the strip, extending its longevity while also protecting it from the elements. Aluminum extrusion "OR" is conveniently sold in 8ft lengths as a completed kit including a pair of end-caps, mounting clips, and one premium poly-carbonate, UV-resistant frosted lens. Order today to discretely accent your projects!

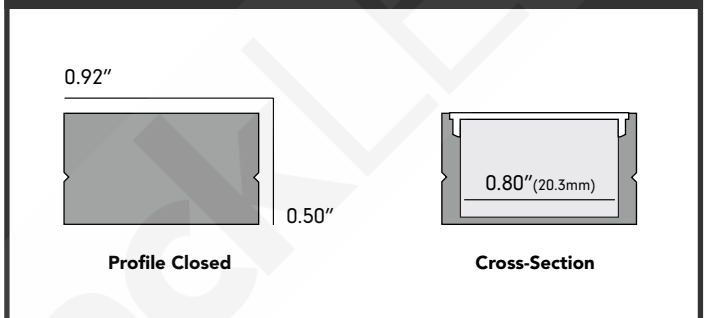
### Features

- Widest and Shallowest Surface Mounted Aluminum Profile Design for DOTLESS LED Lighting.
- A GlowbackLED Exclusive! Engineered to create the best effect.
- Cuttable using any standard miter saw.
- Fast and Easy Installation using snap in place clips!

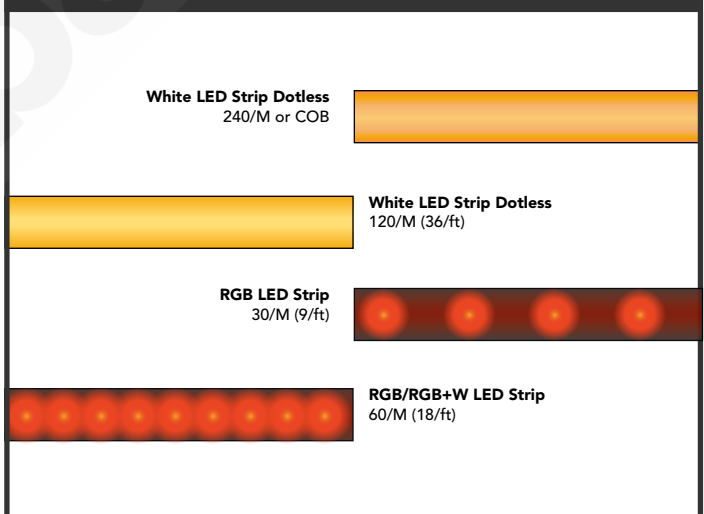
### Specifications

<b>Part#</b>	ALUMOR-96
<b>Length</b>	8ft (94" for free shipping)
<b>Width</b>	0.92" (23.4mm)
<b>Height</b>	0.50" (12.9mm)
<b>Lens Type</b>	Frosted
<b>MAX Light</b>	3 Watts/ft (recommended)
<b>MAX Strip Size</b>	0.80" (20.3mm)

### Dimensions



### Dots



### Mounting Options

