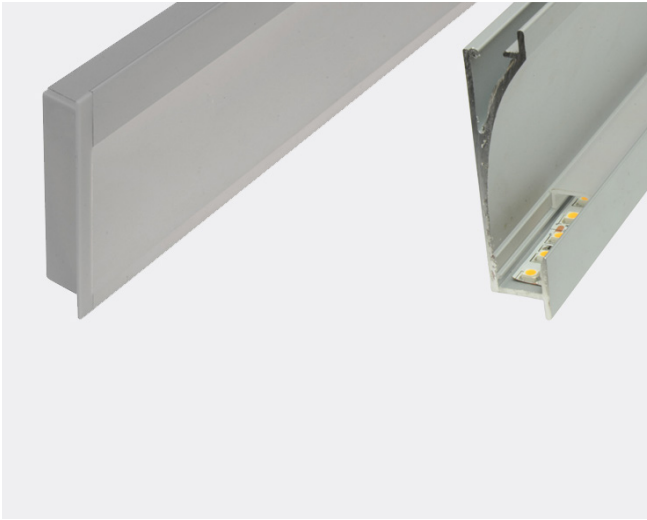


PRODUCT OVERVIEW



A similar yet more slim and compact version of our, aluminum profile "S92", Aluminum Channel "S92" is a perfect solution for accenting hand rails discretely. Aluminum extrusion "S92" can accommodate any LED strip up to 0.39" (10mm) wide, while properly dispersing heat from the strip as well as protecting it from the elements. The compact design and depth of only 0.51" (13mm) allows one to seamlessly recess the channel in almost any surface, while achieving evenly diffused, indirect lighting that can be used in a number of applications such as those for professionally accenting stairways. Aluminum extrusion "S92" is conveniently sold in 6.5ft lengths as a completed kit including a pair of end-caps, and a premium polycarbonate, UV-resistant frosted lens. Order today to discretely accent your projects!

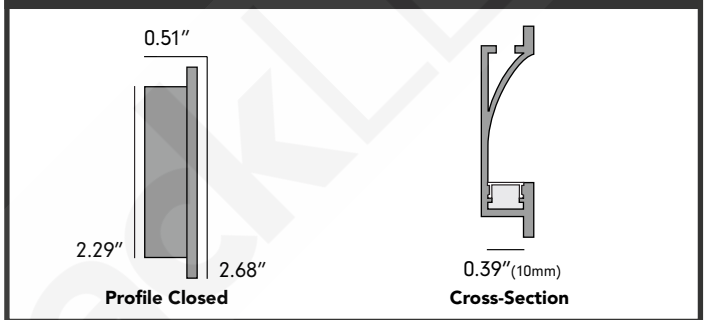
Features

- Professionally accents hand rails discretely.
- Simple recessed installation.
- Protect LED strips from the elements.
- Add modern architectural design.
- Slim profile allows for recession in most surfaces.
- Cuttable with any standard miter saw

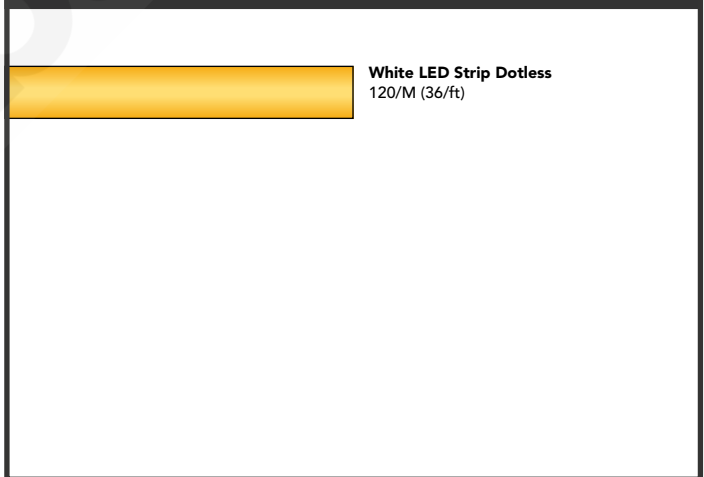
Specifications

Part#	ALUMS92-78
Length	6.5ft (78")
Width	2.29" (58.2mm) 2.68" w/ Flange
Height	0.39" (10mm) 0.51" w/flange
Recess Cavity	2.29" W x 0.51" D
Lens Type	Frosted
MAX Light	3 Watts/ft (recommended)
MAX Strip Size	0.39" (10mm)

Dimensions



Dots



Mounting Options

