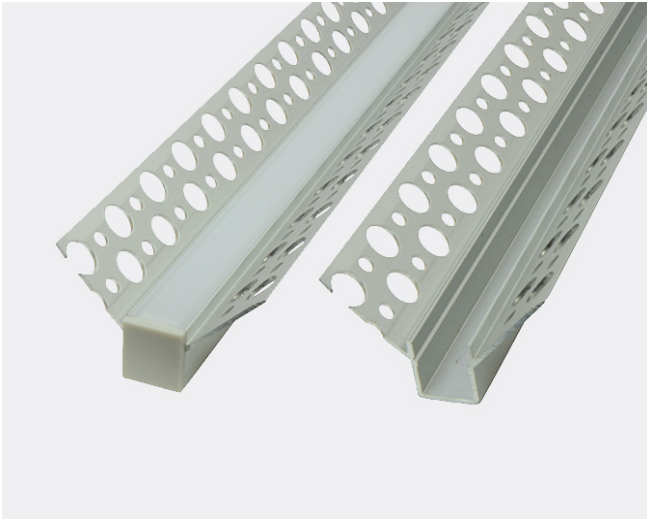


## PRODUCT OVERVIEW

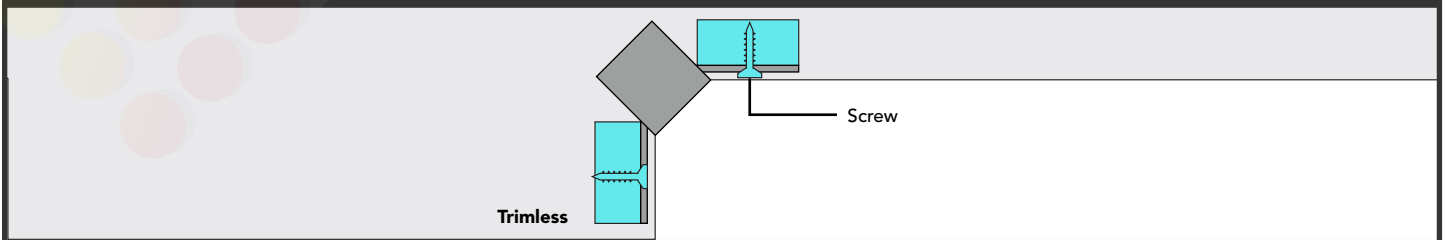


For lighting in tight and difficult to illuminate corners, our Aluminum Profile "DT12" is a perfect solution. With integrated upwards pointing plaster bead along the flanges, Aluminum profile "DT12" can be easily recessed into any corner where two walls meet and give a dark inner corner a decorative modern touch. Seamlessly plaster into any surface of at least 0.35" of depth without showing any flanges or rough finishes. Aluminum Extrusion "DT12" can Accommodate any LED strip up to 0.42" (10.7mm) wide and dissipates heat from the strip, extending its longevity while also protecting it from the elements. Aluminum extrusion "DT12" is conveniently sold in 8ft lengths as a completed kit including a pair of end-caps, and one premium polycarbonate, UV-resistant frosted lens. Order today to discretely accent your projects!

### Features

- Plaster-in profile creates seamless finish.
- Upwards Facing Corner Design.
- Cuttable using any standard miter saw.
- Achieve **DOTLESS** Lighting.
- Simple Installation.
- Miami, FL facility.

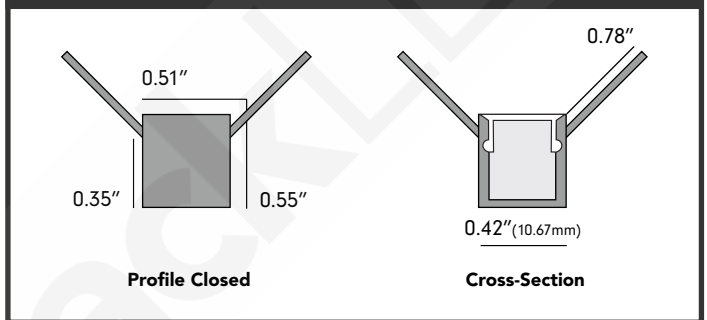
### Mounting Options



### Specifications

<b>Part#</b>	ALUMDT12-96
<b>Length</b>	8ft (94" for free shipping*)
<b>Width</b>	0.51" (12.9mm)
<b>Height</b>	0.55" (13.9mm)
<b>Inner Width</b>	0.42" (10.67mm)
<b>Recess Cavity</b>	0.35" (8.8mm)
<b>Lens Type</b>	Frosted
<b>MAX Light</b>	3 Watts/ft (recommended)

### Dimensions



### Dots

