

Product Overview



Aluminum Profile L ALUML Spec Sheet



Aluminum Profile "L" uses the same aluminum extrusion as Aluminum Profile "K," but features a squared lens instead of a quarter-circle rounded lens. Like Aluminum Profile "K," Aluminum Profile "L" is a corner mounted aluminum channel for medium output LED strips. It is typically used under cabinets, in wall units, and other display and retail lighting applications. Extruded of premium aluminum alloy, Aluminum Profile "L" extends the longevity of your LED strip by dissipating heat. Create dot-free, evenly diffused lighting by using one of our DOTLESS, high-density LED strips. Aluminum Profile "L" can accommodate any low-voltage LED ribbon up to 10.6mm (0.42") wide. Aluminum Profile "L" is sold in 8ft lengths as a completed kit including one pair of endcaps,

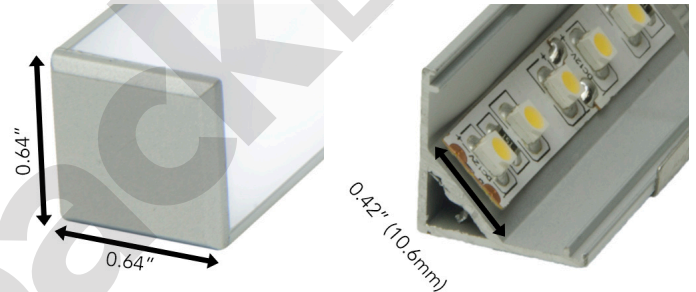
Features

- Create DOTLESS Lighting with our high-density DOTLESS LED Strips.
- Popular for Retail and Cabinet Lighting Applications
- Attractive Quarter-Round Lens emits light at 90 degrees
- Cuttable with any standard miter saw

Specifications

| | |
|----------------|------------------------------|
| Part # | ALUML-96 |
| Length | 8ft (94" for free shipping*) |
| Width | 0.64" (16.3mm) |
| Height | 0.64" (16.3mm) |
| Lens Type | Clear or Frosted |
| MAX Light | 3 Watts/ft (recommended) |
| MAX Strip Size | 0.42" (10.6mm) |

Dimensions

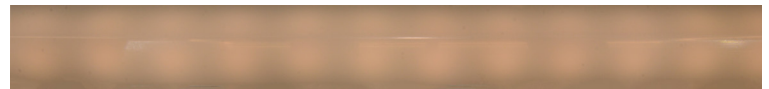


Mounting

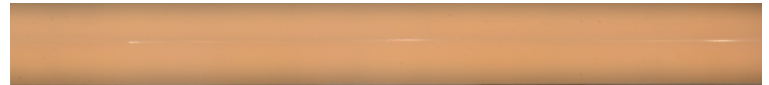
- Use included mounting clips
- Adhesive or VHB Double Sided Tape
- **Direct Screw:** Counter-Sunk Mounting Screws. (Strip installed over screw)

DOTS

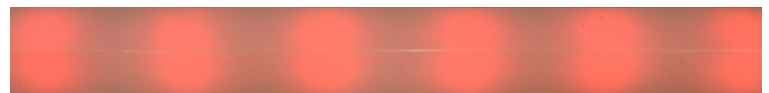
60/M (18/ft) White LED Strip



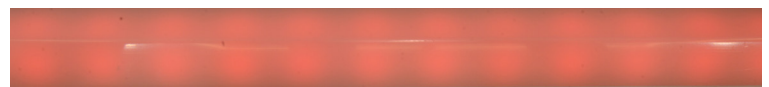
120/M (36/ft) White LED Strip **DOTLESS**



30/M (9/ft) RGB LED Strip



60/M (18/ft) RGB or RGB+W LED Strip



GlowbackLED®

16409 NW 8th Ave

Miami Gardens, FL 33169

1-800-679-4902 • info@bluegateinc.com

GlowbackLED® is a registered trademark of Bluegate Inc
©2019 Bluegate Inc. All Rights Reserved
Specifications subject to change without notice

