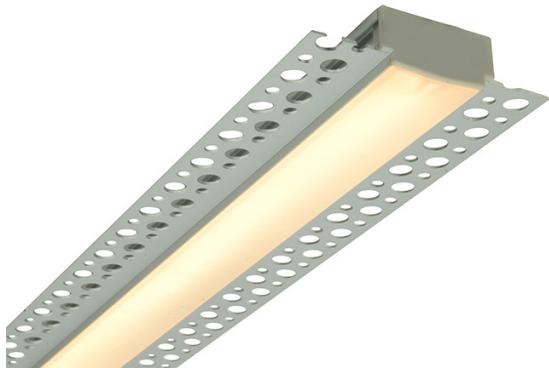


# Product Overview



**LEDBARDT3-XX-YY-ZZ**  
LEDBARDT3 Spec Sheet

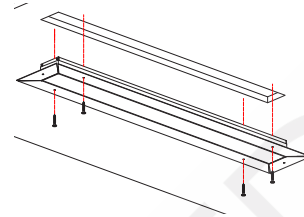


Custom-Built and tailor made to your desire, our **LEDBAR DT3** is a 1" wide, ultra compact low-voltage recessed linear LED fixture with a total of 1.5" of plaster bead, allowing to be plastered over in order to achieve a seamless recession in any surface with at least 0.5" of depth. The trimless "**plaster-in**" design achieves smooth recession, making it a perfect solution for lighting in garages, kitchens, offices, and more. With an inner width of 0.80", **LEDBAR DT3** is capable of housing any type of LED Strip from standard white, to color changing RGB LED Strips. Our **LEDBARDT3** can be built in any size up to 96" as one continuous piece. Longer runs and extended fixtures can be achieved through linkable or custom configurations.

## Features

- Tailor Made to Your Specs! Achieve a high-end, bespoke look and feel in your space.
- Plaster Bead for **Smooth Seamless Recession**.
- Standard >90 CRI, CRI>95 available!
- Trimless Design
- Ultra Compact Dotless Design
- Dimmable (Pair with Dimmable Driver)
- Ultra Long Lifetime (70,000+ Hours)
- UL-Listed
- **5-Year Warranty**

## Mounting



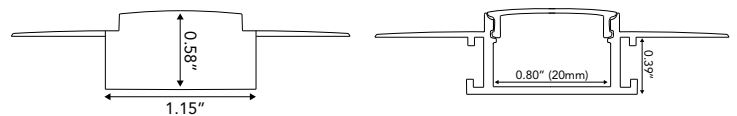
## Available Colors

<b>2200K</b> Amber White	<b>2700K</b> Incandescent White	<b>3000K</b> Warm White	<b>4000K</b> Natural White
<b>6000K</b> Bright White	<b>RGB</b> Color Changing	<b>RGB+W</b> Color Changing+White	<b>CCT</b> Tunable White

## Quick Specs

<b>Product Code</b>	LEDBARDT3-XX-YY-ZZ
<b>Sizes</b>	Any size from 4"-96" (Linkable for long runs)
<b>Input Voltage</b>	12VDC or 24VDC
<b>Power Output</b>	Power Output Per Strip
	3W/ft White   3.5W/ft RGB
	6W/ft H/O White   6W/ft RGB+W
<b>Light Output</b>	180 lumens/ft (White) 480 lumens/ft (High-Output White)
<b>Efficiency</b>	60 lumens/Watt (White) 80 lumens/Watt (High-Output White)
<b>Lifetime</b>	70,000+ Hours (L-70)
<b>Environment</b>	Suitable for Dry or Damp Locations (Waterproof Available Upon Request)

## Dimensions



Input Voltage - LEDBAR - Output - DT3 - Custom Size - CRI - Color - Power Feed Length - Power Entry

12V 24V - II: Standard (<3W/ft) III: RGB+W/CCT Only (<6W/ft) - enter size in inches - CRI>90 Standard CRI>95 High-Output - AW: 2200K IW: 2700K WW: 3000K NW: 4000K BW: 6000K Custom (MOQ/+2Weeks) - RGB RGB+W: 6000K RGB+W: 3000K CCT - Standard: 8ft Custom Size: enter size in inches - Entry Location: Rear

**GlowbackLED®**  
16409 NW 8<sup>th</sup> Ave  
Miami Gardens, FL 33169  
1-800-679-4902 • info@bluegateinc.com

GlowbackLED® is a registered trademark of Bluegate Inc  
©2020 Bluegate Inc. All Rights Reserved  
Specifications subject to change without notice

